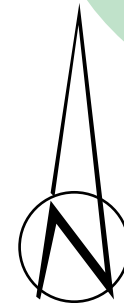


Pkt.	Kurvenradius	Überhöhung
1	—	2,5%
2	—	2,5%
3 A	1.70 m	2,5%
3 B	10 m	0,0%
3 C	10 m	0,0%
3 D	150 m	3,8%
4	R = 375 m	7,0%
5	R = 600 m	6,0%
6	R = 600 m	6,0%
7	R = 60 m	15,0%
8	R = 60 m	15,0%
9	R = 550 m	6,0%
10	R = 550 m	6,0%

Pkt.	Kurvenradius	Überhöhung
11	R = 900 m	5,0%
12	R = 900 m	5,0%
13	R = 600 m	6,0%
14	R = 600 m	6,0%
15	R = 200 m	8,0%
16	R = 200 m	8,0%
17	R = 175 m	10,0%
18	R = 175/400 m	10,0%
19	R = 400/175 m	10,0%
20	R = 175/700 m	10,0%

Pkt.	Kurvenradius	Überhöhung
21	R = 700 m	5,0%
22	R = 70 m	15,0%
23	R = 70 m	15,0%
24	R = 35 m	3,0%
25	R = 35 m	3,0%
26	R = 65 m	3,0%
27	R = 65 m	3,0%
28	R = 75 m	3,2%
29	R = 75 m	3,2%



Schema Lageplan Salzburgring

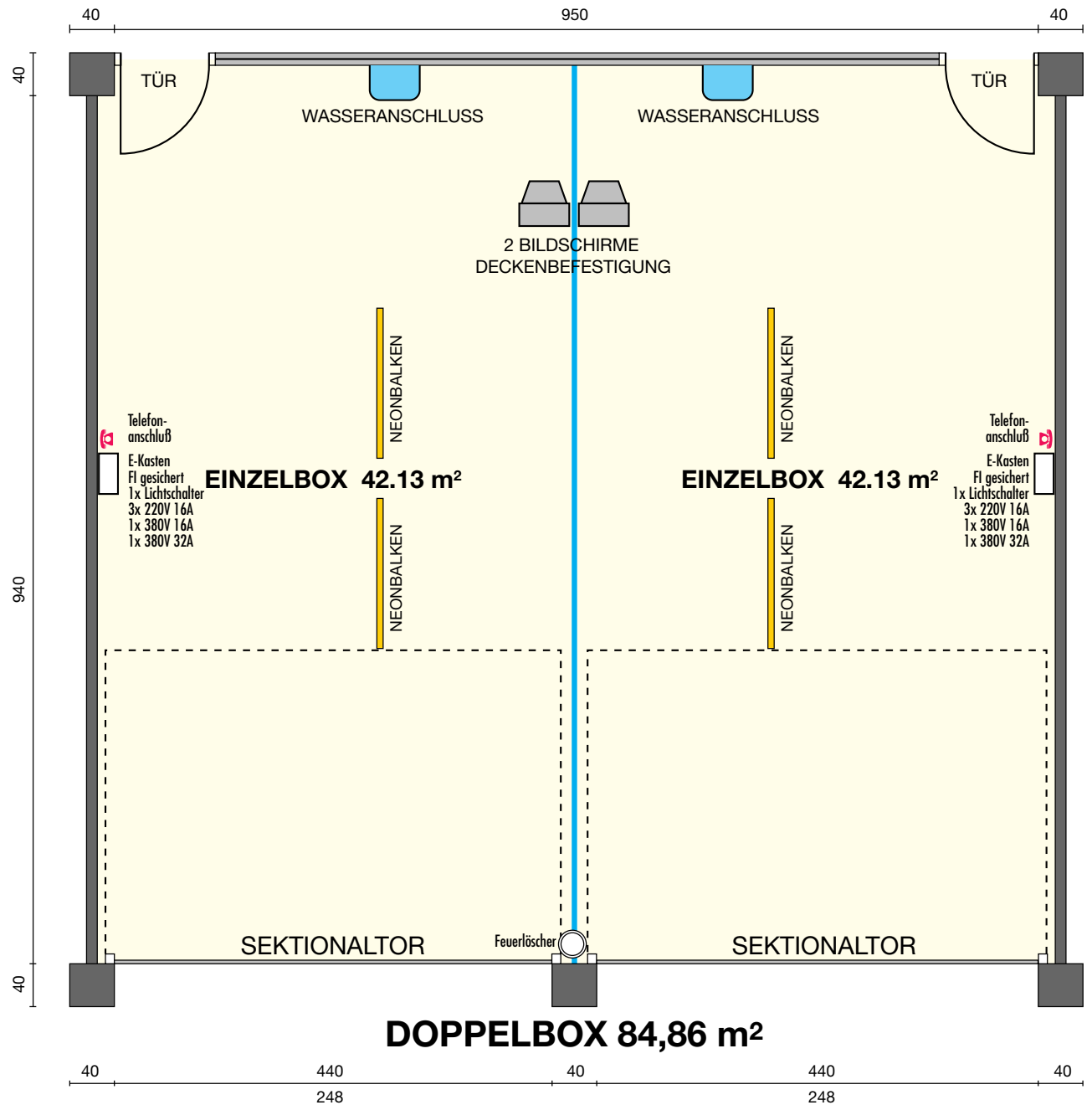
Büro: 5020 Salzburg · Josef-Schwer-Gasse 9 · Tel. 0662 / 84 87 34 · Fax 0662 / 84 87 34-4
 E-Mail: office@salzburgring.com oder rennstrecke@salzburgring.com • www.salzburgring.com

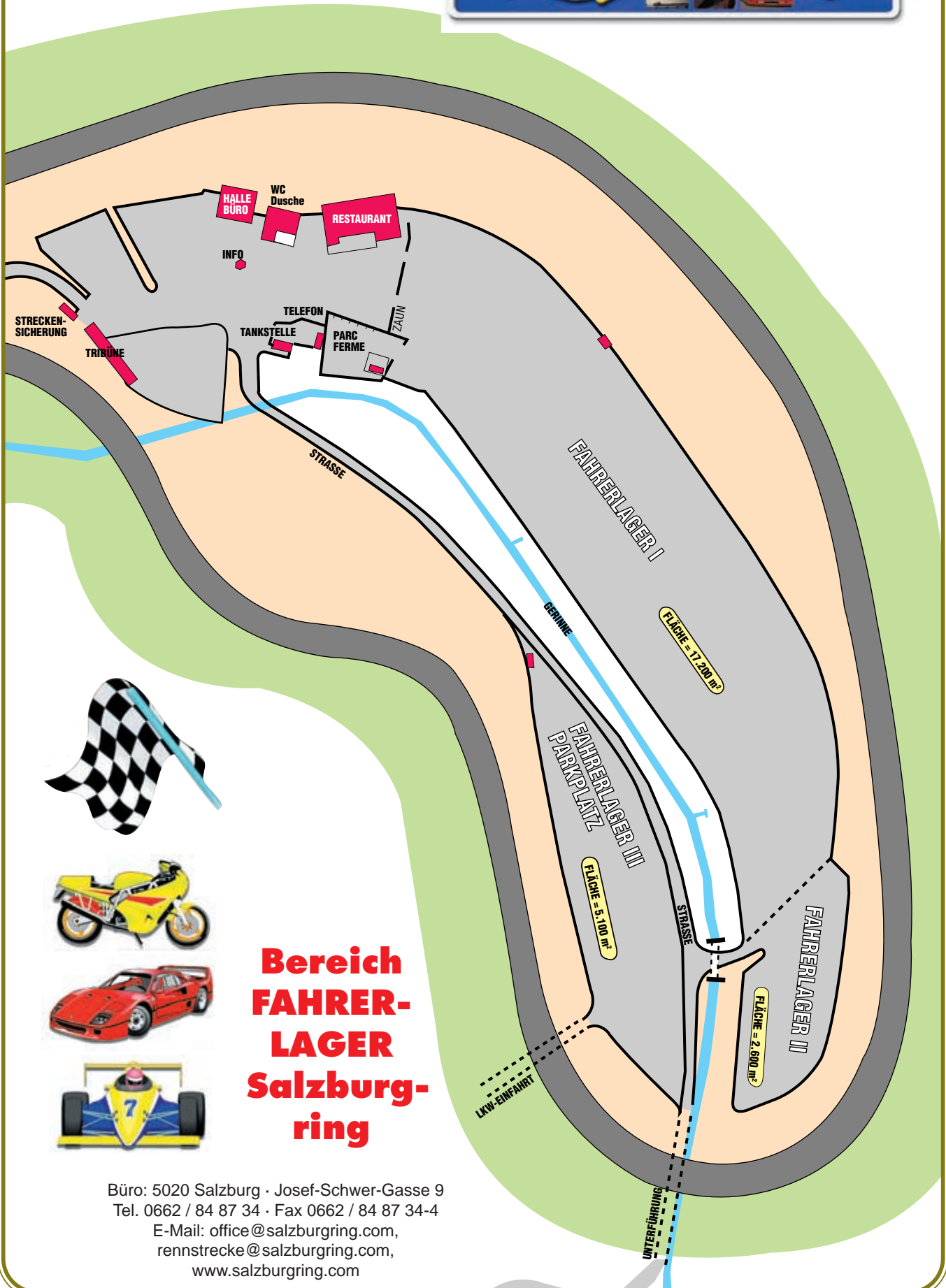


BOXENPLAN Salzburgring



Büro: 5020 Salzburg · Josef-Schwer-Gasse 9
 Tel. 0662 / 84 87 34 · Fax 0662 / 84 87 34-4
 E-Mail: office@salzburgring.com,
 rennstrecke@salzburgring.com,
 www.salzburgring.com



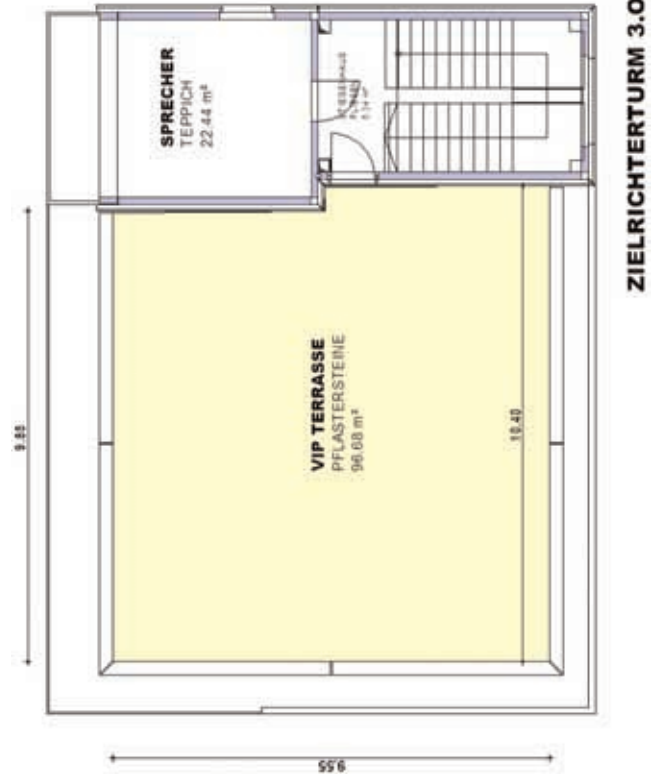
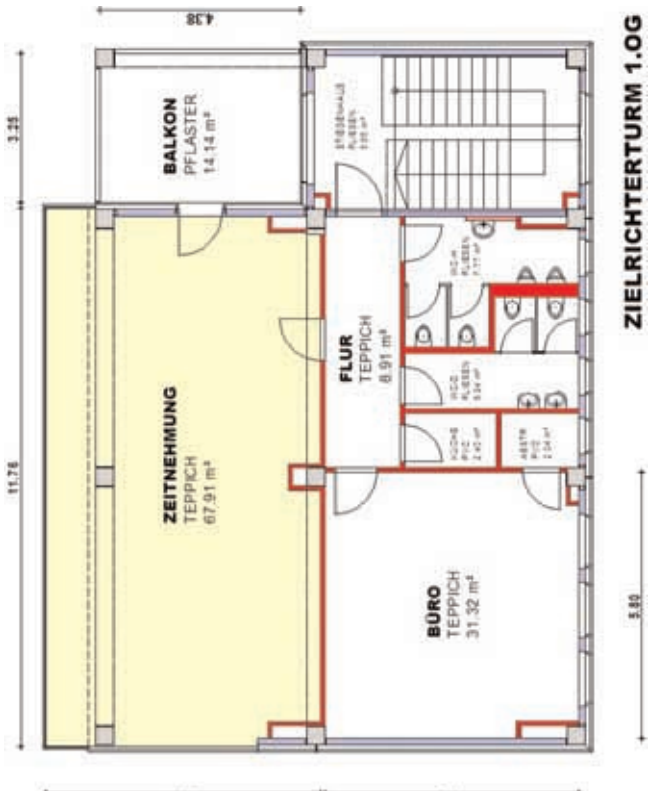
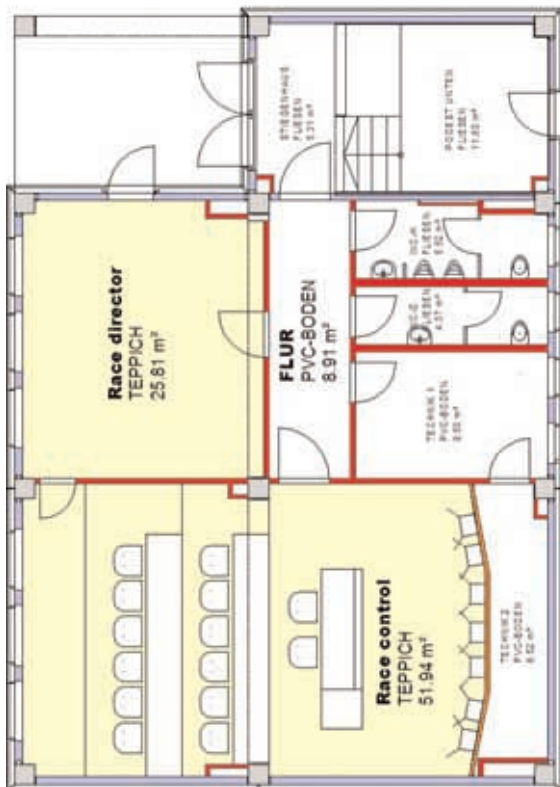


Bereich FAHRER- LAGER Salzburg- ring

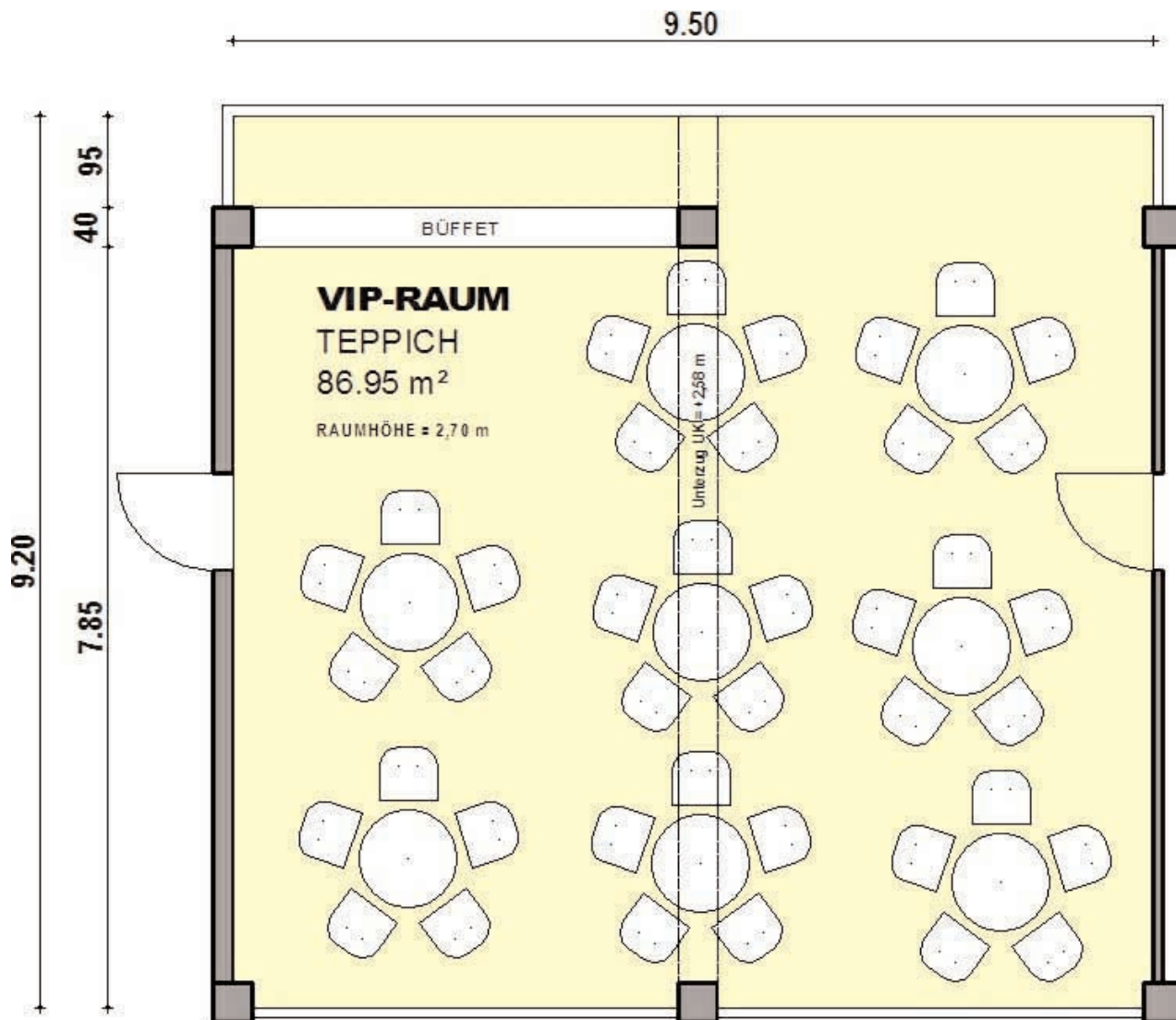
Büro: 5020 Salzburg · Josef-Schwer-Gasse 9
Tel. 0662 / 84 87 34 · Fax 0662 / 84 87 34-4
E-Mail: office@salzburgring.com,
rennstrecke@salzburgring.com,
www.salzburgring.com



Start-/Zielturm Salzburgring



Bereich Boxenkomplex Salzburgring



BOXENKOMPLEX EG

Büro: 5020 Salzburg · Josef-Schwer-Gasse 9
Tel. 0662 / 84 87 34 · Fax 0662 / 84 87 34-4
E-Mail: office@salzburgring.com,
rennstrecke@salzburgring.com,
www.salzburgring.com

